

IV-4753
OIL MIST SEPARATOR

ID : 400 mm
TL-TL : 765 mm
DP : ATM / -0.01 barg
DT : 90 C /
TRIM : 13031

IT-4751
RECYCLE GAS COMPRESSOR
LUBE OIL RESERVOIR

LENGTH: 2100 mm
WIDTH: 1500 mm
HEIGHT: 1200 mm
DP : ATM
DT : 100 C
TRIM : 13031

IK-4751
RECYCLE GAS COMPRESSOR
OIL MIST FAN

RATED CAPACITY : 0.057 kg/s
DRIVER POWER : 1.5 kW
TRIM : 13031

IE-4752A/B
RECYCLE GAS COMPRESSOR
ELECTRIC HEATER

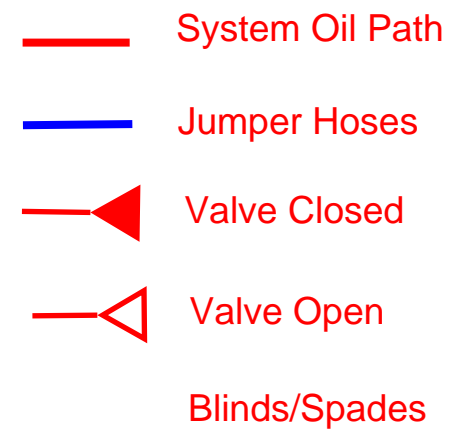
DUTY : 4.0 kW
DP : ATM /
DT : 100 C /
TRIM : 13031

IP-4751A/B
RECYCLE GAS COMPRESSOR
LUBE OIL PUMP

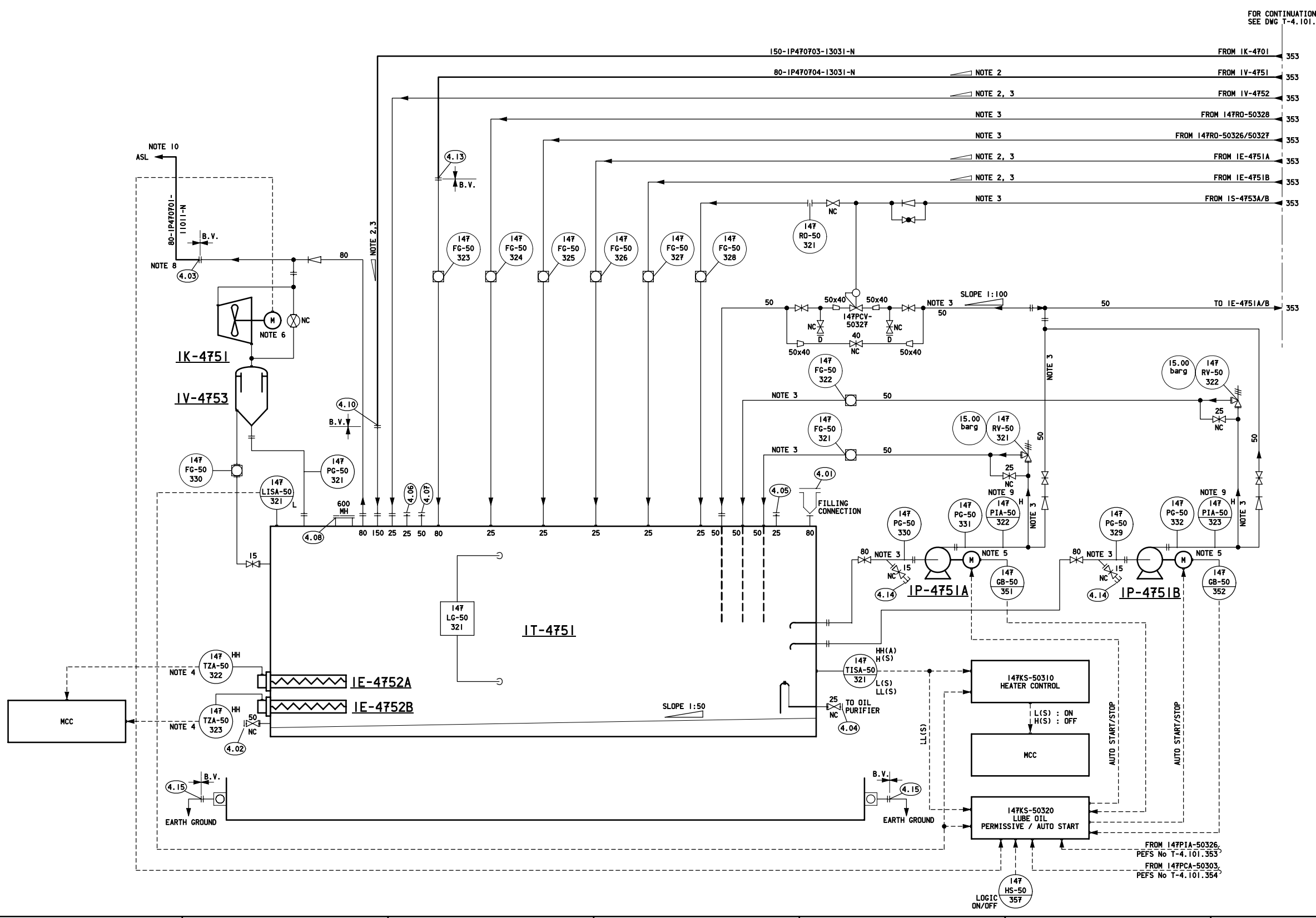
RATED CAPACITY : 5.94 dm³/s
RATED HEAD : 141.2 m
DRIVER POWER : 15.0 kW
DP : 15.0 barg /
DT : 100 C /
TRIM : 13031

NOTES

- FOR GENERAL NOTES AND SYMBOL SEE DWG NOS T-13.370.001, T-13.370.002 AND T-13.370.003.
- MINIMUM SLOPE 4% OR 2".
- PIPING CLASS FOR LUBE OIL PRESSURE RATING PN 150 LBS RF.
- TSHH DIRECT WIRED TO MCC.
- FOR EACH INDIVIDUAL PUMP MOTOR RUNNING, STOP, START, ETC. INDICATORS REFER TO DETAILS ON PEFS NO T-13.370.716.
- FOR FAN MOTOR RUNNING, STOP, START, ETC. INDICATORS REFER TO DETAILS ON PEFS NO T-13.370.716.
- DELETED.
- ALL RELIEF VALVES AND VENTS DISCHARGING TO ATMOSPHERE SHALL HAVE AN 8MM WEEPHOLE AT LOWEST POINT OF THE DISCHARGE LINE UNLESS OTHERWISE HARD PIPED DRAIN IS SPECIFIED. WEEPHOLES SHALL LOCATED SO AS NOT TO DISCHARGE ON TO ACCESS WAYS/EQUIPMENT WHEN RELIEF VALVE IS IN OPERATION.
- H : VISIBLE ALARM (PUMP RUNNING INDICATION PURPOSE).
- HORIZONTAL CUT OFF = 45



TRAIN 1, REPEAT FOR TRAIN 2



FOR CONTINUATION
SEE DWG T-4.101.

PROJECT/GROUP/LOCATION		CONTRACTOR PROJECT No	
CONTRACTOR CONTRACT No		ORIGINATING ORGANISATION	
CONTRACTOR NAME			
UNIT I-4700			
PCWBS	DB	CONTRACTOR DRG No	
SCALE	NONE	PROJECT DRG No	REV E

PROCESS ENGINEERING FLOW SCHEME
CATALYTIC DEWAXING UNIT (CDW)
COMPRESSOR LUBE OIL SYSTEM IOF2 (IK-4701)